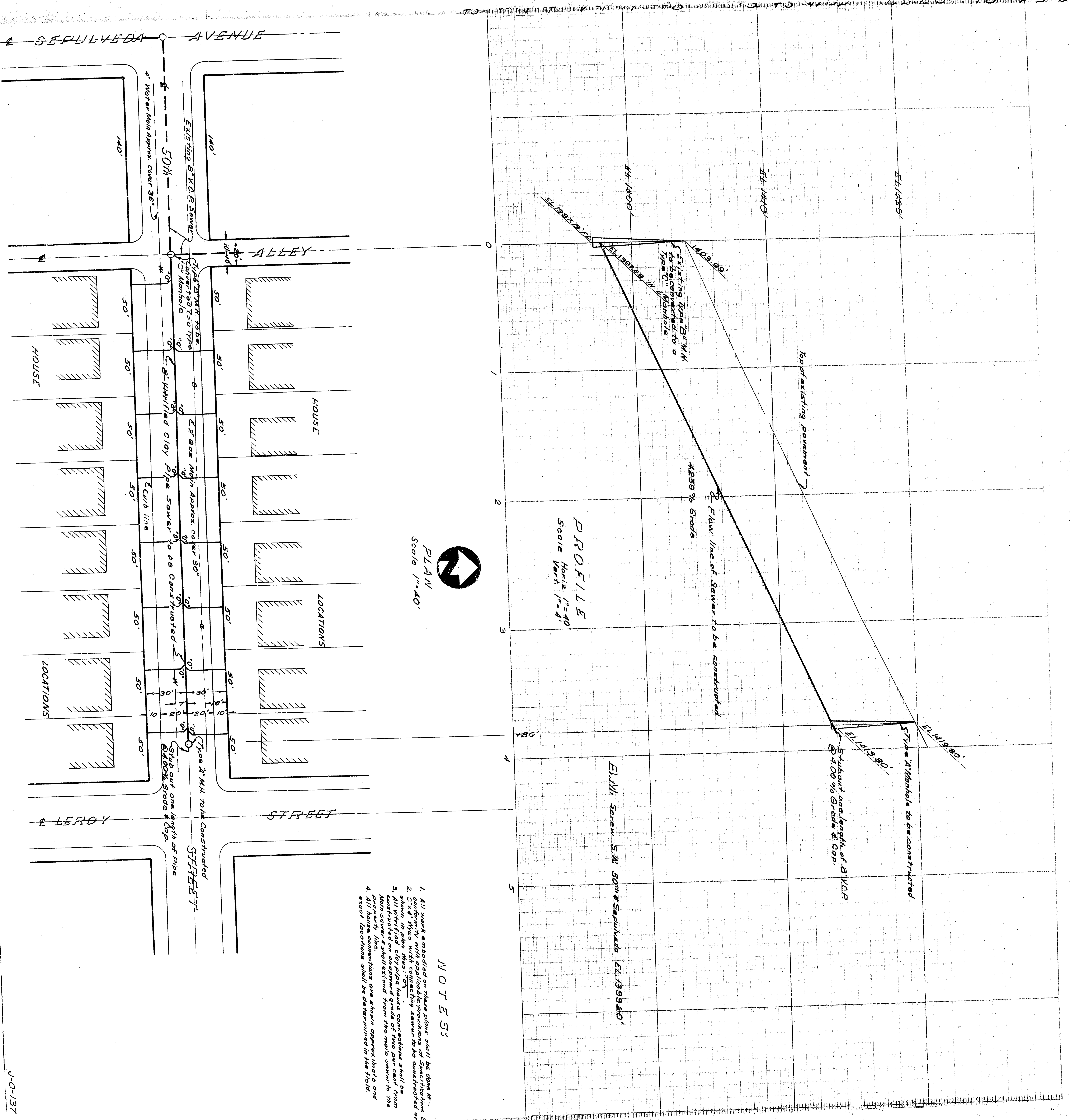


DEPARTMENT OF ENGINEERING  
 CITY OF SAN BERNARDINO  
 STREET  
 50th STREET  
 Sewer  
 Alley East of Sepulveda Ave to Leroy St.  
 J-0-137  
 SUBMITTED BY: [Signature]  
 APPROVED BY: [Signature]  
 AUG 1955  
 DRAWN BY: [Signature]  
 CHECKED BY: [Signature]  
 REGISTERED CIVIL ENGINEER NO. 7085

1254 Plan 2358 50th Street Sewer





PLAN  
Scale 1"=40'

PROFILE  
Scale Vert. 1"=4'

- NOTES:
1. All work to be done in accordance with the specifications of the City of San Bernadino.
  2. The sewer line shall be constructed in accordance with the specifications of the City of San Bernadino.
  3. All materials used shall be of the best quality and shall be approved by the City Engineer.
  4. The sewer line shall be installed in accordance with the specifications of the City of San Bernadino.

City of San Bernadino  
 DEPARTMENT OF PUBLIC WORKS  
 ENGINEER RING  
 CITY OF SAN BERNARDINO  
 STREET  
 50th  
 SEWER  
 Alley East of Sepulveda Ave to Leroy St.  
 SUBMITTED BY: [Signature]  
 APPROVED BY: [Signature]  
 DATE: Aug 1955  
 SHEET: 2358  
 DRAWN BY: [Signature]  
 REGISTERED CIVIL ENGINEER NO. 7085

1254 Plan 2358 50th St Sewer Sepulveda Ave to Leroy St